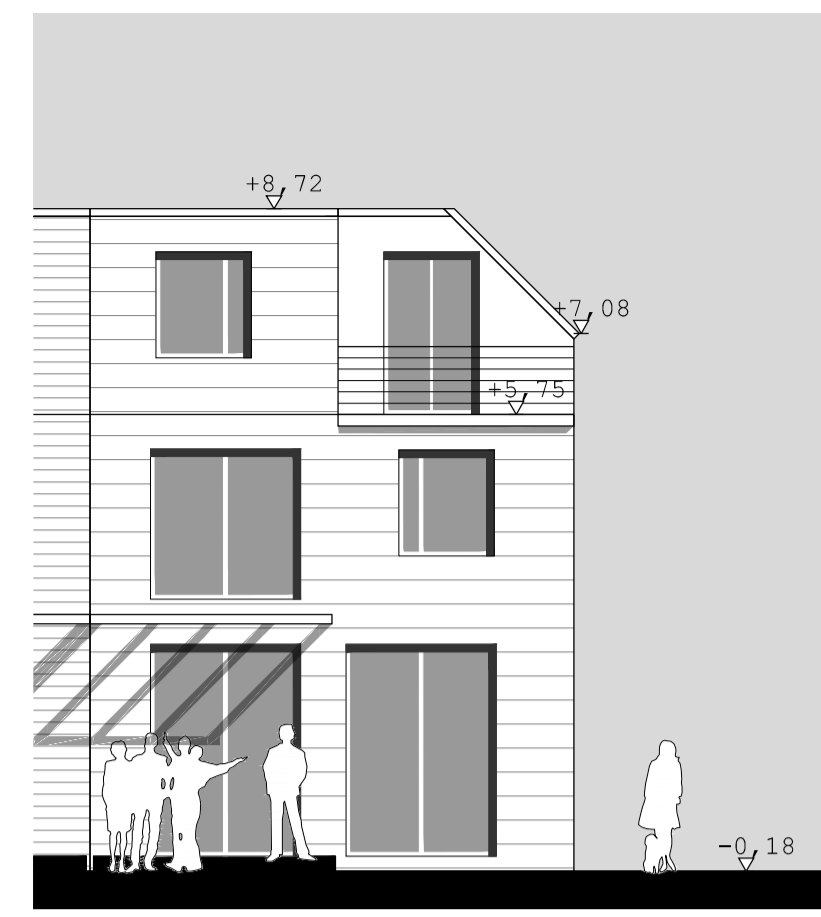
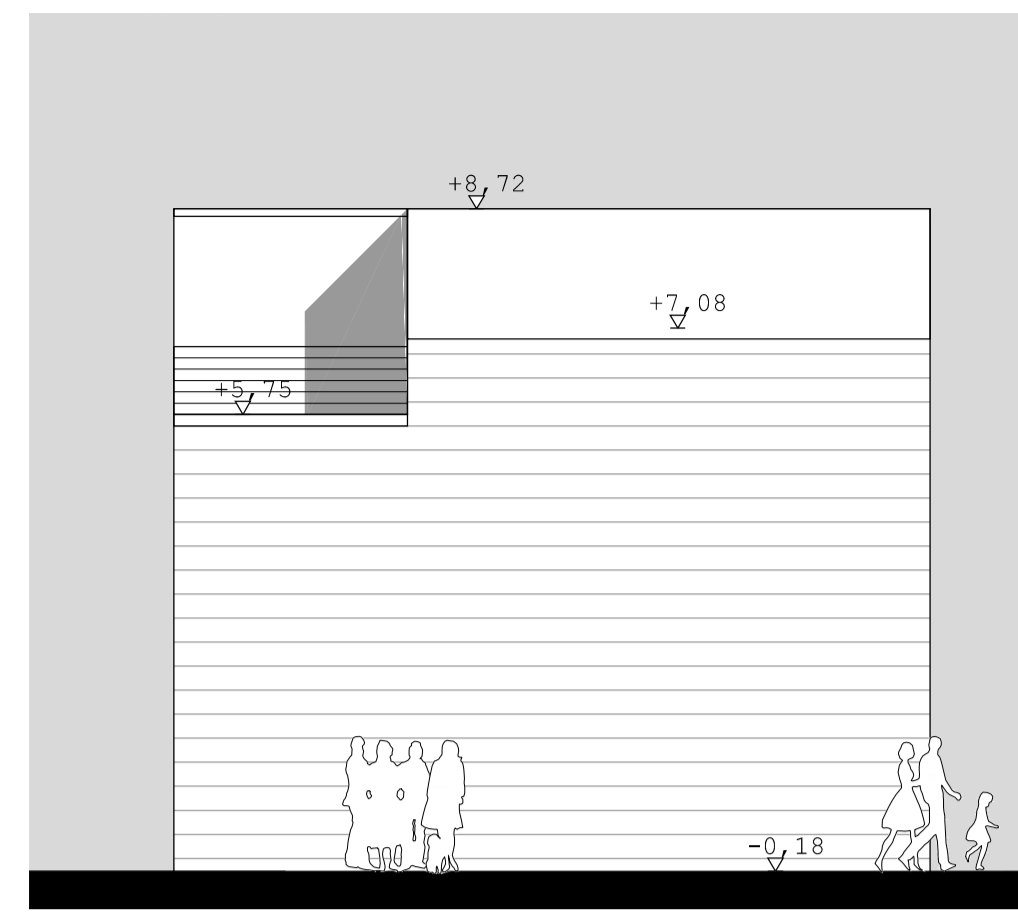


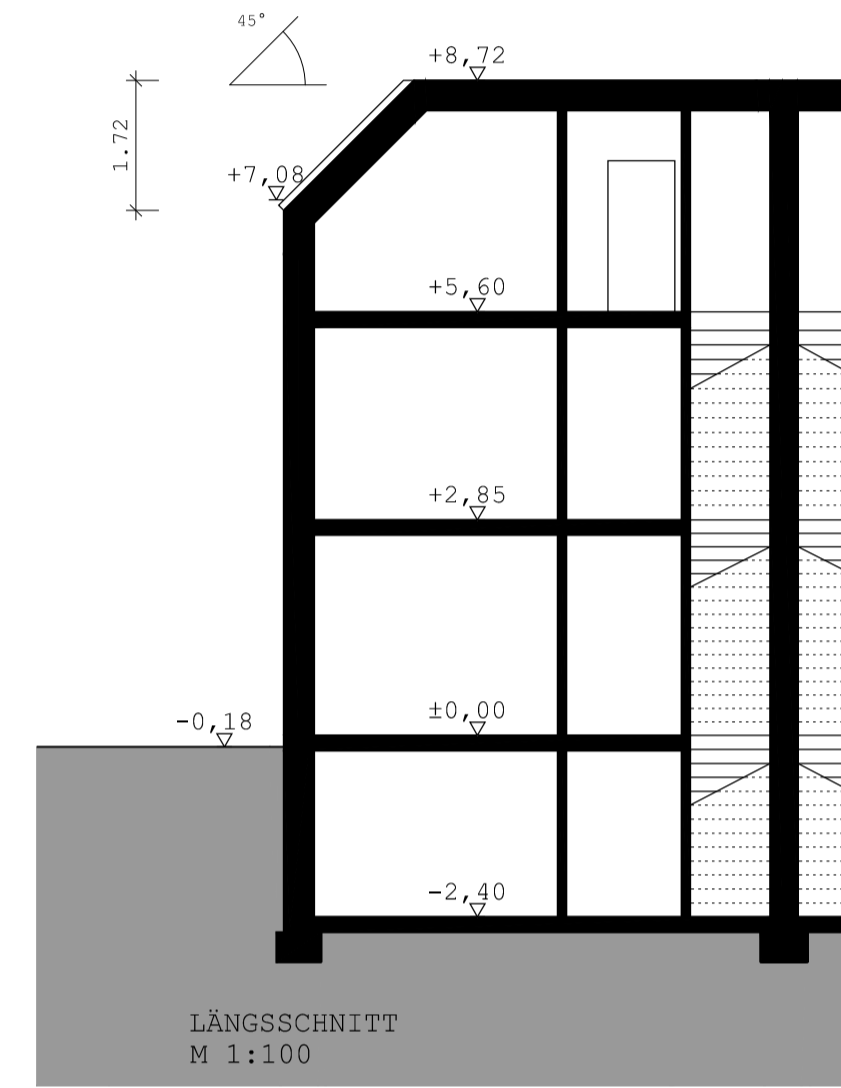
ANSICHT WEST
M 1:100



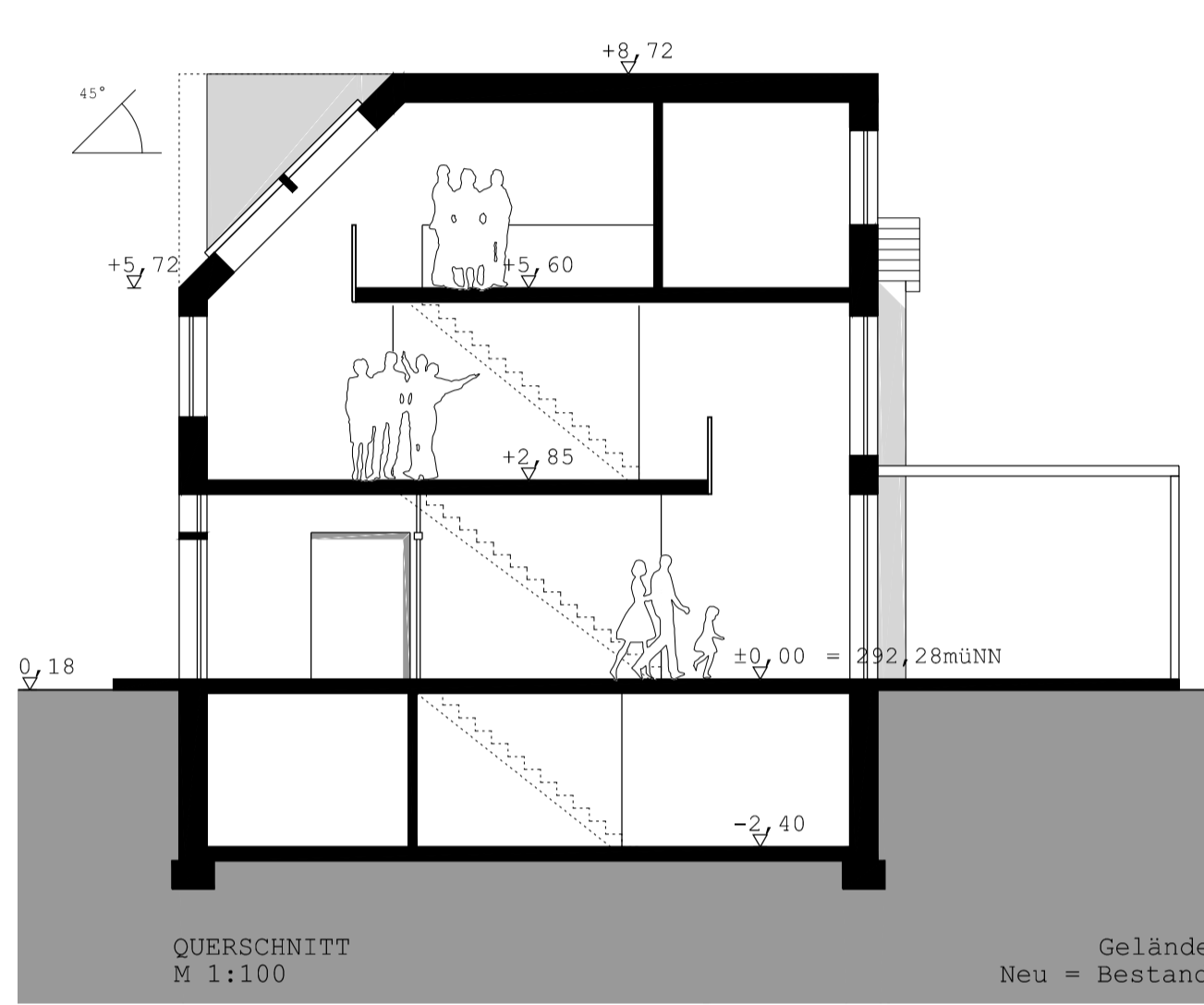
ANSICHT OST
M 1:100



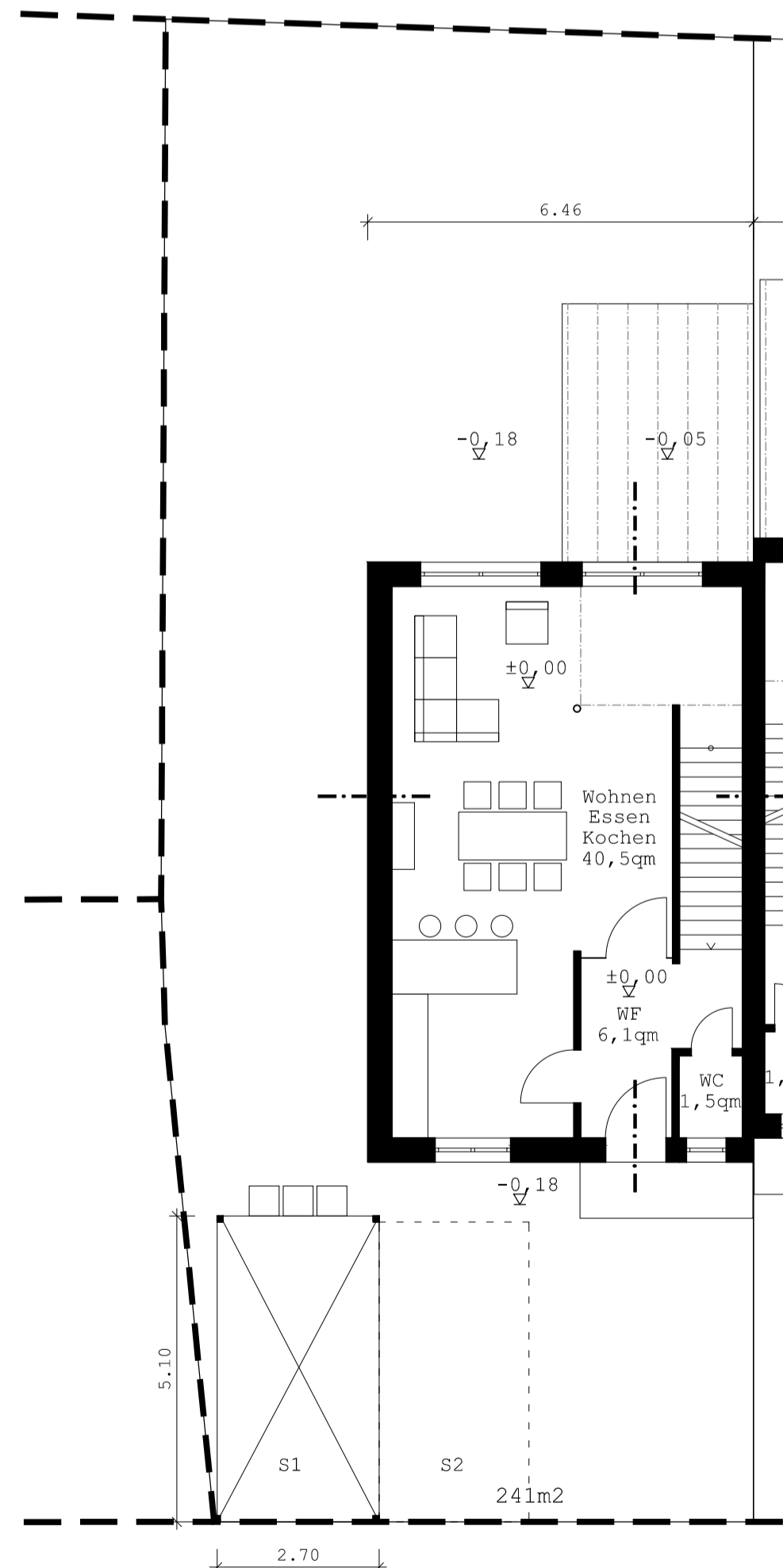
ANSICHT NORD
M 1:100



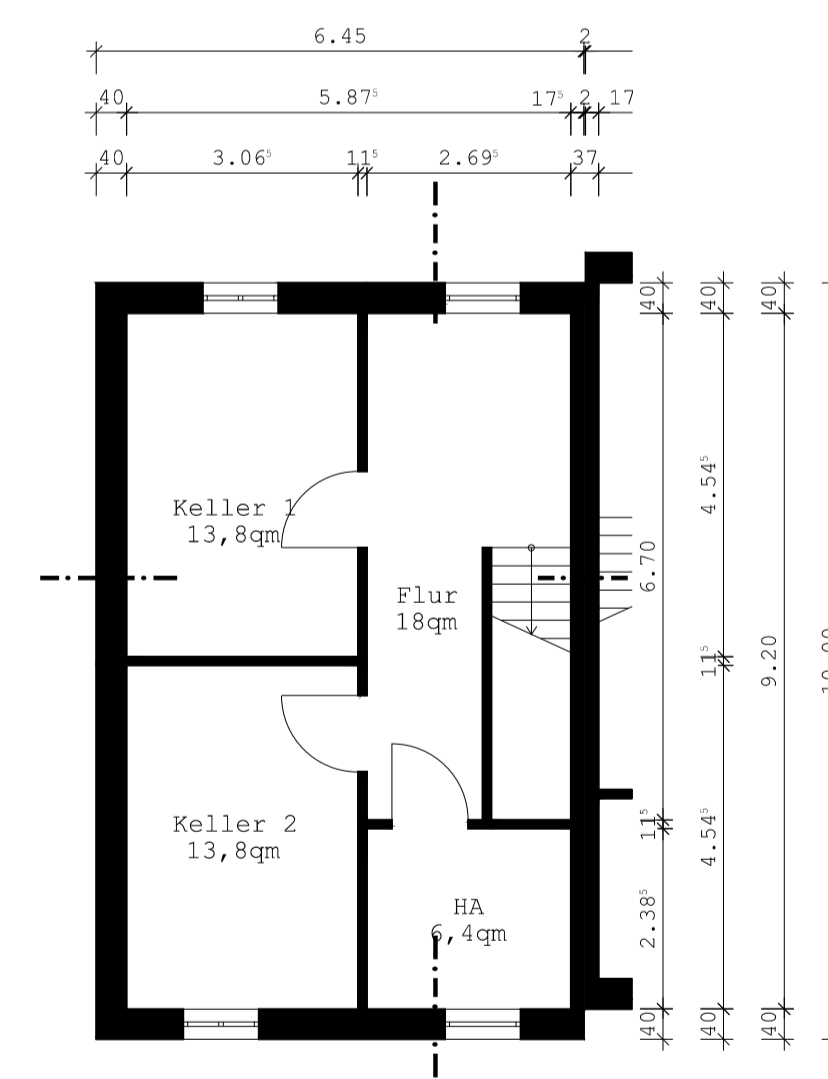
LÄNGSSCHNITT
M 1:100



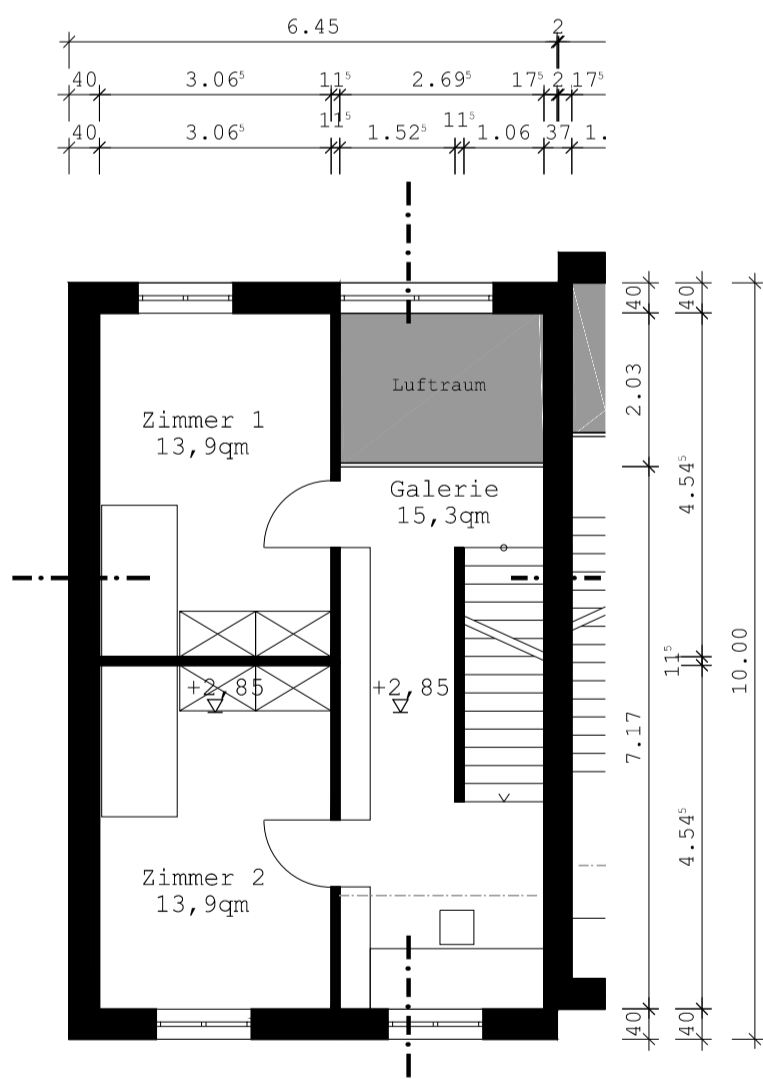
QUERSCHNITT
M 1:100



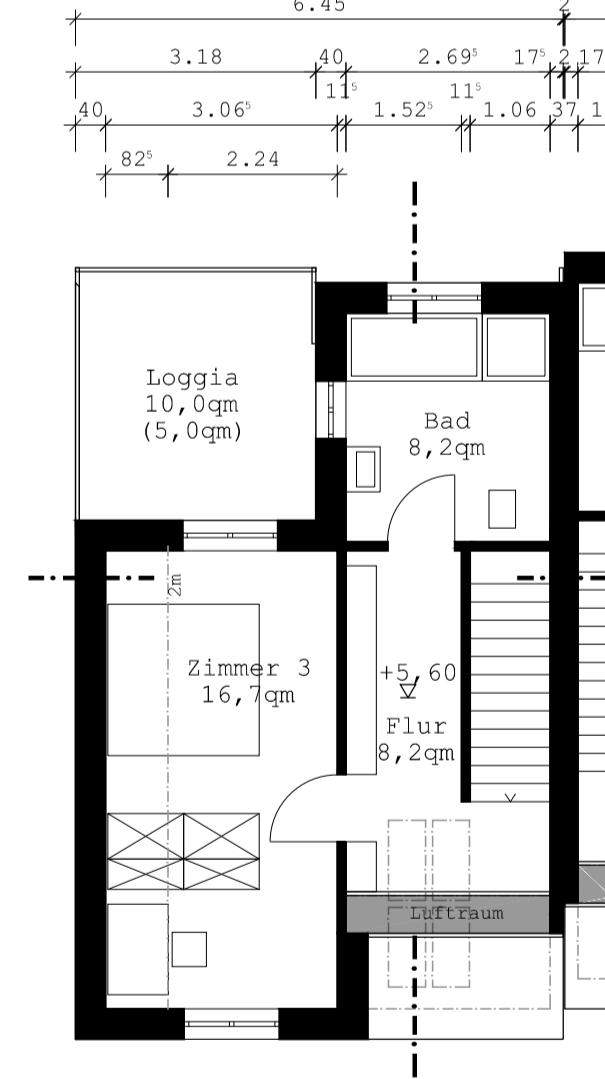
ERDGESCHOSS
M 1:100



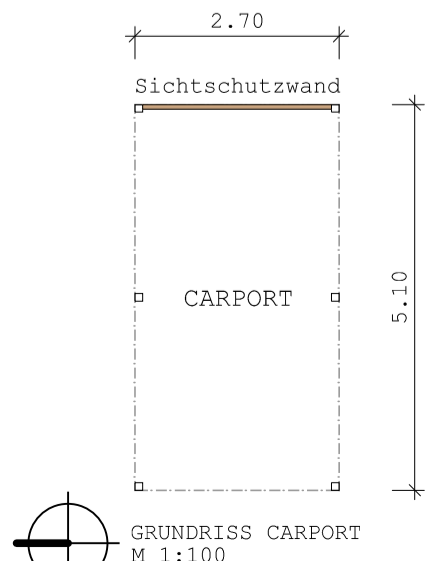
KELLERGESCHOSS
M 1:100



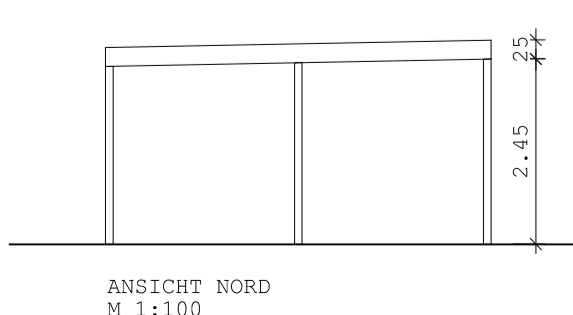
OBERGESCHOSS
M 1:100



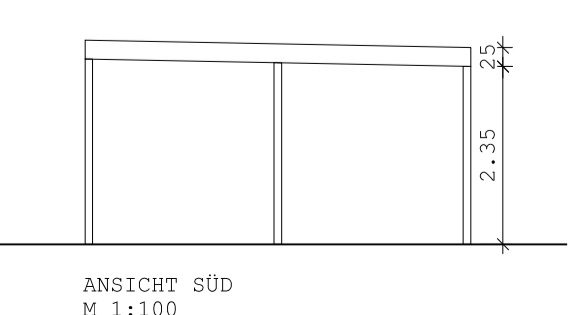
DACHGESCHOSS
M 1:100



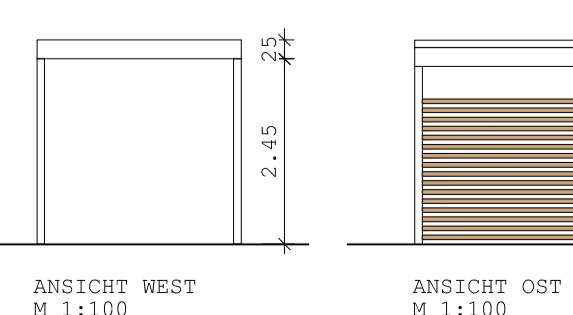
GRUNDRISS CARPORT
M 1:100



ANSICHT NORD
M 1:100



ANSICHT SÜD
M 1:100



ANSICHT WEST
M 1:100



ANSICHT OST
M 1:100

ERGÄNZUNG



LAGEPLAN
M 1:500

Planer: ARCHITEKTUR UND DENKMALPFLEGE THEO KURBISCH 91052 ERLANGEN TEL 09131-850380 FAX 09131-533 8561 INFO@ABKY.DE	Bauort: Flurstück 44/8 Gemarkung Uttenreuth Raiffeisenstraße 9-13 91080 Uttenreuth	Bauherr: Gemeinde Uttenreuth Erlanger Straße 40 91080 Uttenreuth
----------------------------------------------------------------------------------------------------------------------------------------------	------------------------------------------------------------------------------------------------	---------------------------------------------------------------------------

Neubau Doppelhaushälfte HAUS 1 GRUNDRISSSE ANSICHTEN, SCHNITTE LAGEPLAN	PROJEKTNUMMER: 150-2023
	DATUM: 03.08.2023
	ZEICHNER: hk
	BLATTFORMAT: 841x594mm
	MASSTAB: 1:100 / 1:500
PLANNUMMER: 4-001V/b	